

# FIGURE MODEL SCULPTURE COURSE

## FIGURE MODEL SCULPTURE COURSE

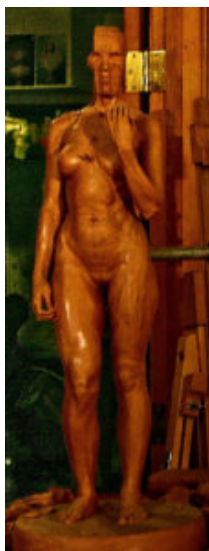


FIGURE  
MODEL  
SCULPTURE  
COURSE,  
Demonstratio  
n Sculpture  
from class

This course will be taught in four parts, each part consisting of 13, four-hour sessions ( daytime ), or three-hour sessions ( evening time ). The same pose, and intended Life Model, or Figure Sculpture each time for the duration. There will be a one-half hour to one hour ( day ), or one-half hour ( night ) review for the class after the life model each session, making a total of four hours - ( day ), or three hours - ( night ). Additional optional limited workshop time available without life model, to work on the sculpture from a demonstration sculpture made during the life model session by the instructor. Limited optional workshop time is coordinated as a specific time slot each week depending on the class, and availability during a particular week. Limited optional workshop time is included in the class price, but attendance is not required. Rescheduling the

limited optional workshop is not possible after the timeslot is coordinated with the students for the semester. The figure will be studied in greater depth than in the modello course. The first half of the course will cover bone structure alignments, the masses and proportion. The second half will focus on the particular surface of masses, in depth surface anatomy and personality of the structures of the model. Both halves of the course will cover geometric patterning of shapes, commensurate planes, and planar rhythms. The added time length will enable a more mature articulated sculpture.

cost:

\$ 1200.00 for each quarter - Day

or

\$ 1200.00 for each quarter - Eve.

The eye takes in information that the mind develops to realize subject and form. We only see what we think we know and have learned to perceive. Through a series of exercises, students will begin the process of seeing dimensionally within a context of related shapes. Because of this study, students will initiate the necessary skills to construct aesthetic form. Sculpture study will comprise three-dimensional figure sculpture in plasteline (non-drying clay).

## **COURSE OBJECTIVES:**

Copyright: Parker Studio of Structural Sculpture, Peyton Bradford Parker, sculptor

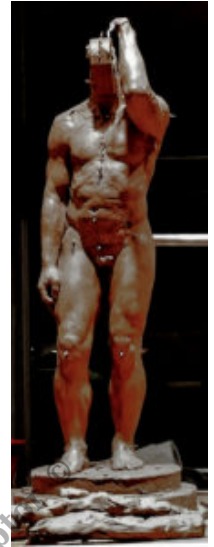


FIGURE  
MODELLO  
SCULPTURE  
COURSE,  
Sculpture  
Demonstratio  
n For Class by  
P. Brad  
Parker



FIGURE  
MODELLO  
SCULPTURE

COURSE,  
Sculpture  
Demonstration  
For Class by P.  
Brad Parker

To develop perception of **patterned shape**

To develop the ability to take **angles** and **proportions**

To understand **glyptek shape** as it describes form

To develop **turning rythems** to create an effective composition

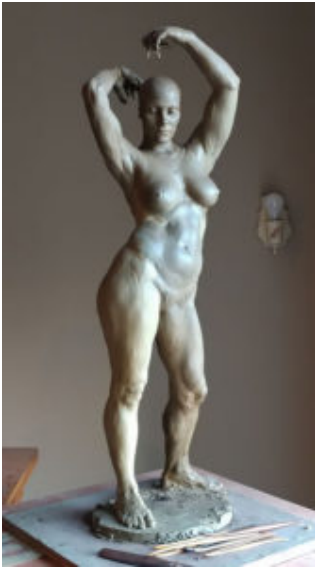
To develop **visual scale** from life to the sculpture

To understand **commensurate planes**

To learn **basic, to intermediate anatomy**

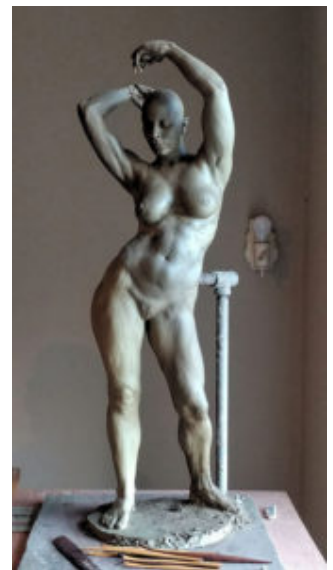
An armature appropriate to the above-mentioned class constructed prior to the first paid classes, as a free benefit for those that have paid for the 13-week session, is instructed and built in the Parker Studio Atelier. Each student supplies materials for the construction of the Figure Sculpture armature. Two cut to proper size, glued, and tacked together 22 x 22 inch A/C Exterior 3/4 plywood fir boards, (nail tacks should be counter sunk on the head side, and the point ends should not stick through the opposite plywood board surface). Next, the glue now dry between the tacked together plywood boards, the board should have three to five coats of polyurethane painted on all edges, also both front, and back main sides, which should be completely dry to the touch, and feel like the plywood is coated in thick plastic. After the completion of the preparation of the plywood boards, the board is brought to the free armature building class with plumbing pipe supplies, aluminum alloy sculpture wire rolls, flat head machine bolts, etc..., as detailed in the requested supply list. Additionally, Sculpture tools, and Chavant NSP Non-Sulfur, Soft Brown Plasteline are supplied by each student for their sculpture project, also detailed in the requested supply list.

---



Female Standing  
Figure Unfinished  
From Life Model by  
P. Brad Parker

Copyright: Parker Studio of Structural Sculpture, Peyton Bradford Parker, sculptor ©



Female Standing  
Figure Unfinished  
From Life Model by  
P. Brad Parker

---

Students of painting and drawing, as well as those of sculpture, will benefit from these courses. Through the study of anatomy, running rhythms, natural geometric shape type, shape projection (seeing three-dimensionally from a single point of view), commensurate planes, balance, symmetry and asymmetry, the students will come to better understand the actual shapes of the bust or figure and to perceive the interrelationships which cause the figure or portrait to seem capable of function and movement. The instructor will point out specific shape types in the model and demonstrate how every large shape is reflected in each smaller part of the head or figure. Structural anatomy and the balance of weight and mass will be studied in depth. An understanding of the large masses as a base for smaller details will be strongly emphasized and, subsequently, the bust or figure will seem more natural and clearly ordered. Shadows will be used as a tool to reveal shape instead of hiding it. As a result of the course, students will become less likely to do work which appears oversimplified, disjointed or appear cartoon-like. Individual styles may be achieved later by choice rather than by mistake.

Students will also have visual access to a unique and extensive collection. There are Anatomical Models, and European Female, Male Skeletons available for reference, some of which were produced in Germany from the earlier 20th century: dissections cast from life into hand painted plaster - a series of four levels of the head / neck - from surface to deeper level structures, and a plaster hand painted anatomical torso; anatomical models of various scale, plasters from N.Y.C. full body in sections of dissection from life, as well as European Antique Sculpture Plaster Casts, and Anatomical scale Figure Plasters. Classes of Sculpture and Drawing will define what is sculpture, and what is drawing, theory, and practical application from a traditional art perspective, with content as influenced from Greek Classical, Greek Hellenistic, and the traditions developed in Renaissance, Baroque, Neo-Classical, and Neo-Hellenistic art.

---

Sculpture Armature will be built in a class previous to the first weeks class with the model. A complete supply list is available for the Sculpture Armature and Sculpture Tools for enrolled students. Classes are limited to 10 students.

---

Parking is free, there is plenty of space available for the model and students to park on the Square, as well as additional parking behind the townhouse in a private parking area.

---

More advanced classes available.

**Private Sculpture Studio, Drawing & Sculpture Classes, By Appointment - Open Drawing & Sculpture Group Sessions, Commissioned Portrait Bust Sculpture, Fountain Sculpture, Figure Sculpture, & Relief Sculpture Compositions. Private Gallery of exhibited sculpture, by appointment only.**

[contact-form][contact-field label='Name' type='name' required='1']  
[contact-field label='Email' type='email' required='1']  
[contact-field label='Website' type='url']  
[contact-field label='Comment' type='textarea' required='1']  
[contact-field label='Telephone Number' type='text']  
[contact-field label='Name of the Art Class Course%26#x002c; or Open Group you are interested in attending%26#x002c; or requesting information on. ' type='text']  
[contact-field label='City%26#x002c; State%26#x002c; Country' type='text']  
[contact-field label='The day of the week%26#x002c; the hours available%26#x002c; time frame you would be interested in an ongoing Class Course Session%26#x002c; or Open Group Session to participate in. There is the possibility of an additional Class%26#x002c; or Open Group Sessions depending on the response of enrollment%26#x002c; or participation interest. The main Art Classes page heading has what are active Class Course Sessions%26#x002c; and Open Groups. ' type='text']  
[contact-field label='Potential Student%26#x002c; Artist participant in an Open Group%26#x002c; or you are a potential Life Model?' type='text']  
[contact-field label='New Field' type='text']  
[/contact-form]